

SX1PTZ-22x4K Series

Explosion Proof PTZ Camera Station

Integrated with 8MP [4K] 22x Optical Zoom Ventionex VX2 Sony Sensor Camera Module



SX1PTZ-W



SX1PTZ-LEDW

Main Features



Marine grade
AISI316L Stainless
Steel material



Ex II 2 G Ex db op pr
IIC T6 Gb / Ex II 2 D Ex
tb op pr IIC T80°C Db



IP 66 / 68



Vandal-proof IK10
ratings



Option for IEEE
802.3bt PoE++
(90Watt)



8MP [4K] resolution
22x optical zoom lens



Motorized 6.4 -
138.5mm



Option for LED
illuminator available

Technical Data

General		
Certification	Ex II 2 G Ex db op pr IIC T6 Gb / Ex II 2 D Ex tb op pr IIIC T80°C Db	
Protection Level	IP 66 / 68, TVS 6000V Lightning Protection, Surge Protection and Voltage Transient Protection	
Operating Temperature	-40°C to 60°C	
Relative Humidity	≤95%	
Mechanical		
Body Material	Stainless steel 316L material	
Sight Glass Material	Window with hardened mineral clear tempered glass	
	Window with Germanium glass (for SX1PTZ-G and SX1PTZ-GL model)	
Pan & Tilt Speed	Variable speed option: 0.1 ⁰ /s to 45 ⁰ /s	
Pan & Tilt Movement	Pan: 360° continuously	Tilt: -90° ~ +90°
Overall Dimension (WxHxD)	Please refer to overall dimension drawings of each model.	
Weight	Approximate 38KG	
Internal Usable Size for Camera Module	Ø80 x 155 mm	
Wiper Mechanism	Available for all model	
Cable Entries	1 x M25 (optional additional cable entry upon request)	
Electrical		
Operating Voltage	AC110-240V (0.5A - 1.10A), 50/60Hz Optional: IEEE 802.3bt PoE++(90W)	
Power Consumption	Max 110W (110V), Max 120W (240V)	
Thermostatically Controlled Heater	T°C on: <10°C, T°C off: >10°C	
Optional		
LED Illumination	Up to 200 meters (for SX1PTZ-LEDW model)	
Built in Fiber Optic Module	Single Mode or Multi Mode or Dual Mode (-SM or -MM or -DM model, please refer to below ordering info)	
Accessories		
Standard	Sunshield for Camera Housing	
Optional	Wall Bracket, Sunshield for Pan & Tilt Body	

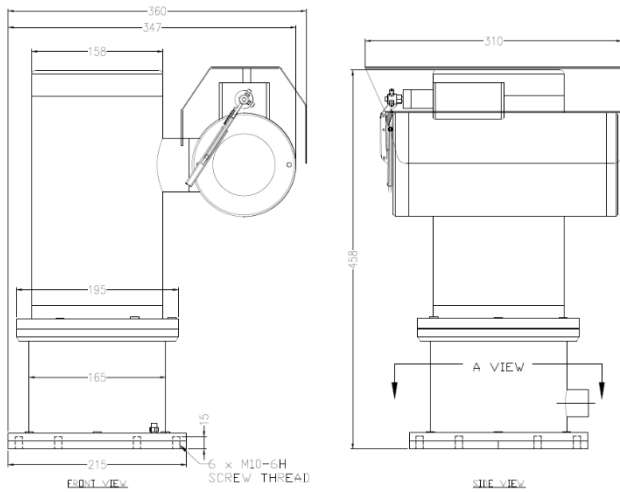
IP Camera/Lens

Camera		
Day/Night	Automatically removable IR-cut filter	
Shutter Time	1~1/10K s	
Noise Reduction	2DNR, 3DNR, NR by motion	
Image Settings	Color, Brightness, Sharpness, Contrast, White Balance, Exposure Control, Masking, Text Overlay	
Corridor Mode	Corridor Mode 90°, 180°, 270° rotation	
Image		
Image Sensor	1/1.8" Progressive CMOS	
Effective Pixels	HxV = 3864x2180, 8MP [4K]	
Pixel Size	2.0 μm	
Lens	f =6.4 mm (wide) to 138.5 mm (tele), F1.5	
FOV	Horizontal: 64° (wide), 3° (tele)	Vertical: 37° (wide), 2° (tele)
Zoom	22x Optical zoom, digital zoom ready	
Min. Illumination	Color: 0.04Lux	B/W: 0.002Lux
Frame Rate (Maximum)	H265: HDR 4K @30fps + d1@30fps HDR 6M @30fps + 720p @30fps	
	H264: HDR 4K @30fps + d1@30fps HDR 6M @30fps + 720p @30fps	
	MJPEG: 1080p @30fps	
Compression Standard		
Video Compression	H.265/H.264/MJPEG	
Video Streaming	Up to 4 individually configurable streams in H.265/ H.264/ MJPEG Configurable resolution/ frame rate/ bandwidth LBR/ VBR/ CBR in H.265/ H.264	
Network		
Security	User Authentication/ HTTPS/ IP Filter/ IEEE 802.1x	
Supported Protocols	ARP, PPPoE, IPv4/v6, ICMP, IGMP, QoS, TCP, UDP, DHCP, UPnP, SNMP, SMTP, RTP, RTSP, HTTP, HTTPS, FTP, NTP, DDNS	
ONVIF	Profile S/ G/ Q/ T conformant	
System Integration		
General Events	Motion Detection/ Tampering	
Intelligent Video Analytics	(optional upon request) Human, Vehicle & Object Detections for Tripwire / Intrusion / Loitering / Abandoned Object / Missing Object / Parking Detection / Crowd Detection	
Advanced Analytics	(optional upon request) Fire Detection or Smoke Detection	
Intelligent Platform	(optional upon request) Simpniify Unified Intelligent Platform Integration, Radar Tracking Integration	
General		
Storage	Support for microSD/ microSDHC/ microSDXC card (up to 512GB) Support for recording to NAS	

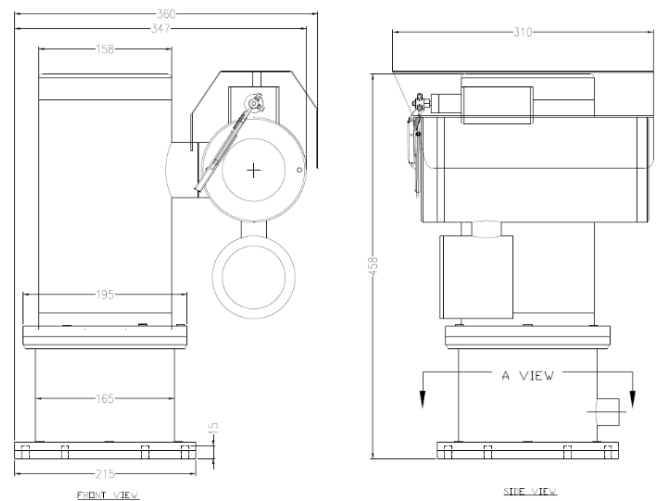
*Analog camera and other camera module options are available upon request.

*Thermal camera options are available for G model. Please contact us for the details

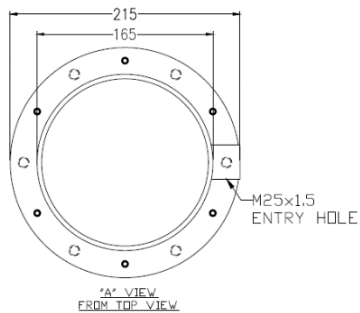
Outline Dimensions (mm)



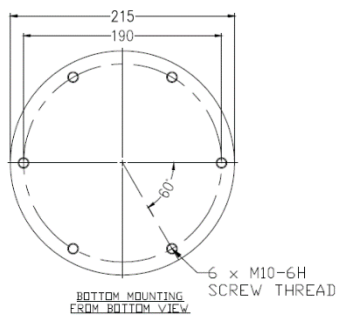
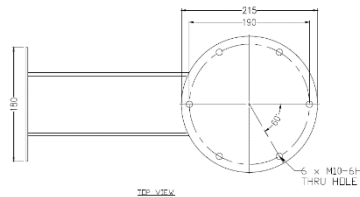
SX1PTZ-W Outline Dimensions



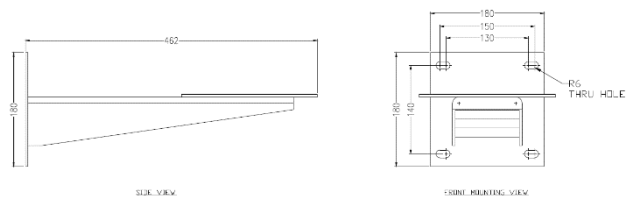
SX1PTZ-LEDW Outline Dimensions



Base View from Top



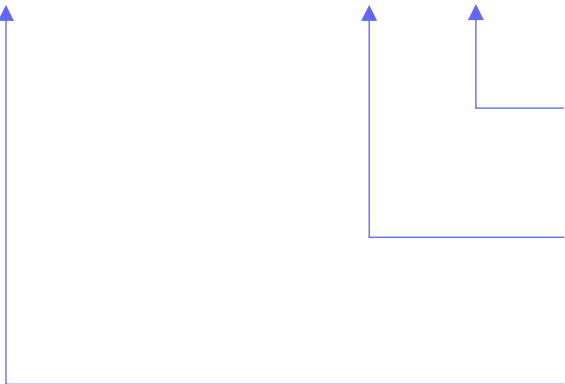
Base View from Bottom for Mounting



WB-SX1PTZ - Wall Bracket Outline Dimensions

Model & Ordering Code

SX1PTZ - X - 22x4K - X - X



POE Options

Blank : No additional option
POE : POE++

Built-in Fiber Optic Module Options

SM : Single Mode
MM : Multi Mode
DM : Dual Mode

Camera Station Options

W : Fitted with wiper mechanism
LEDW : With LED Illuminator and Wiper

Standard Accessories

SCH-SX1PTZ : Sunshield for Camera Housing

Optional Accessories

WB-SX1PTZ : Wall Bracket
SPT-SX1PTZ : Sunshield for Pan & Tilt Body