

# Simple Unified Platform

Organizational threats and risks are growing and changing all the time. Your business reality means managing these increasing risks with fewer resources.

“  
Are you in Control ?  
”

## Legacy Systems

### System Growth

- More systems mean additional management software
- Security, IoTs, Communications, Fire, Safety, Energy and Building Management, etc. systems, each has its own software and user interface

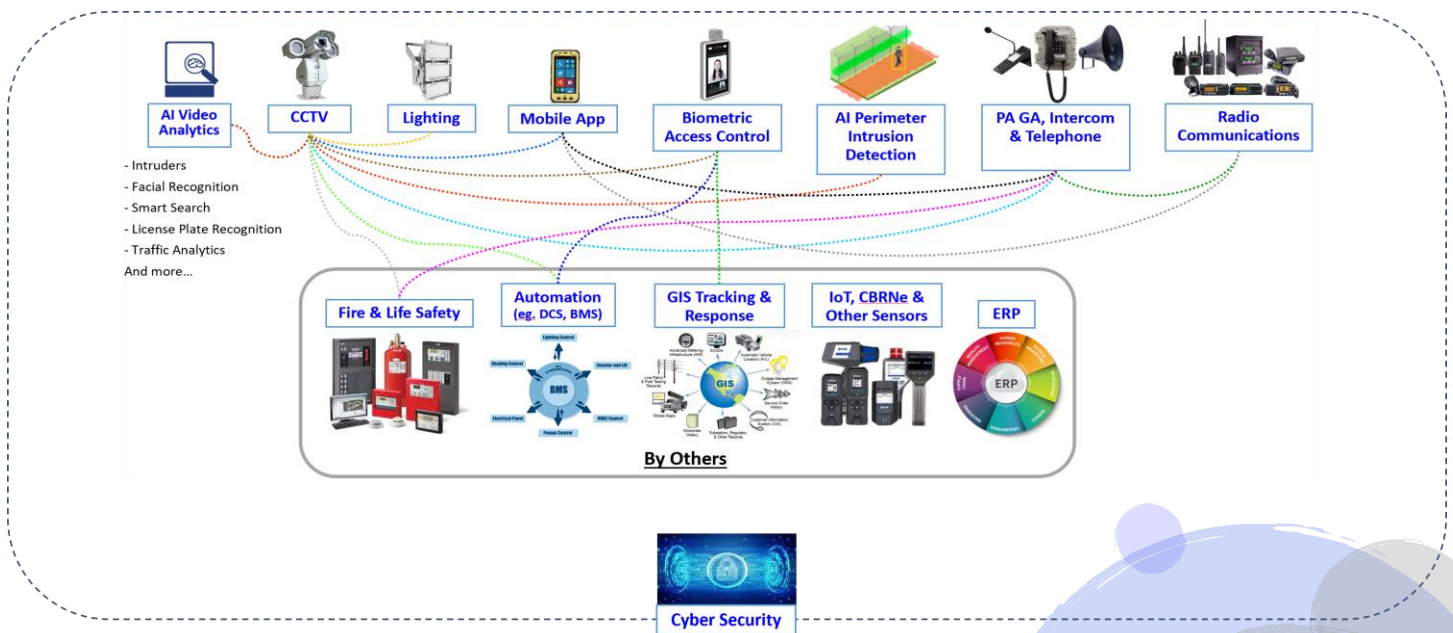
### System Inflexibility

- Systems become **inflexible**, and need more resources to manage
- Abundance of **information silos**

### Vulnerable Organization

- Organization becomes vulnerable when faced with a major incident
- A cohesive **command and control** system cannot be executed.

Today, more than ever, your ability to deliver relies heavily on the quality, integration, and flexibility of your technology. Below image shown is the example of typical system site operations.



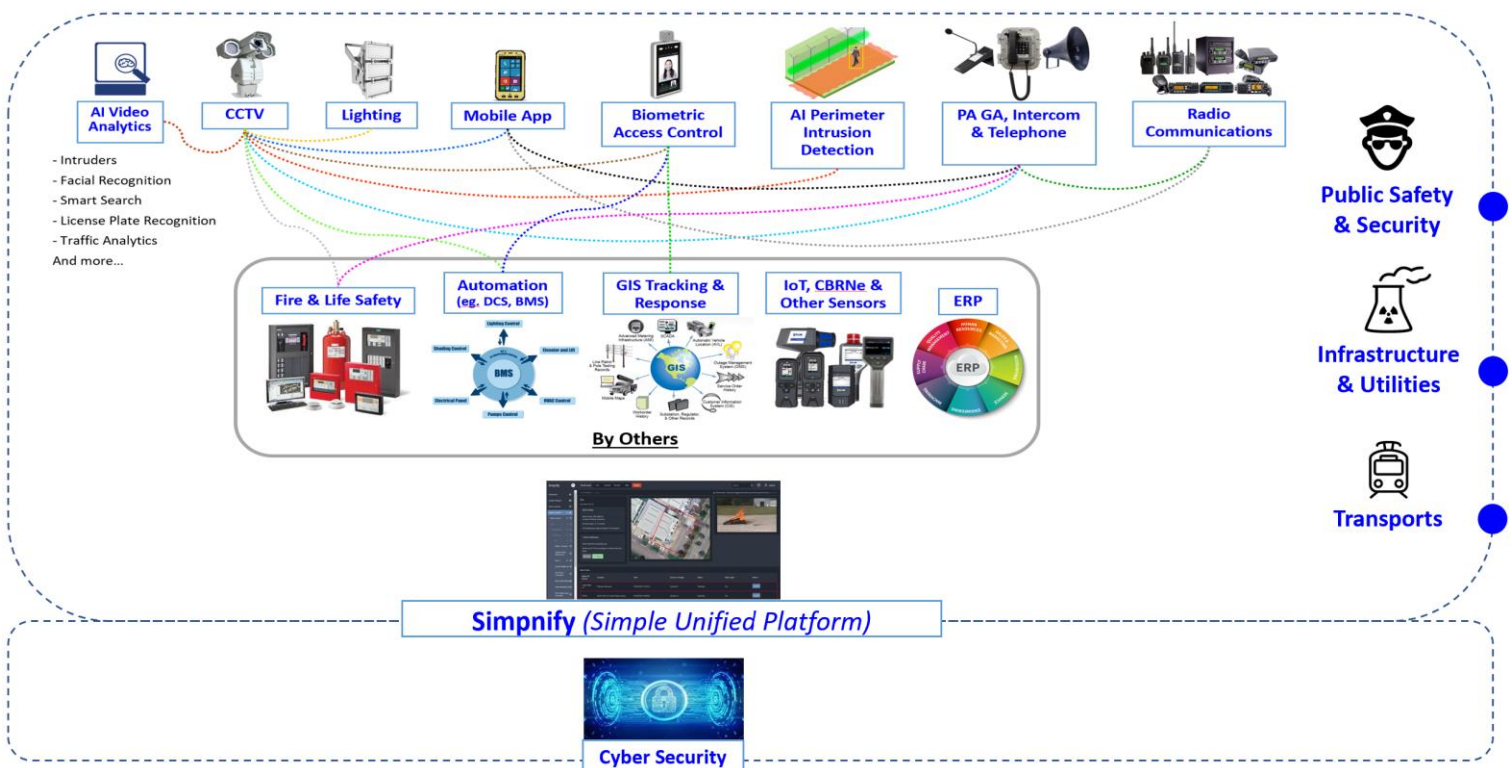
*In short, with a legacy disparate systems, your ability to plan, perform, measure and report in an integrated and proactive way, go unsupported.*

“  
It's time to unify  
& revolutionize  
your command  
& control  
”

## Our solution

Simpnify, Simple Unified Platform is a software that provides a platform and applications, designed to **integrate multiple unconnected systems & devices**, and control them through **one comprehensive user interface**.

It **collects and correlates events** from existing disparate systems and devices to empower personnel to identify and **proactively resolve situations**, to enhance enterprise-wide risks, threats and daily operations handling.



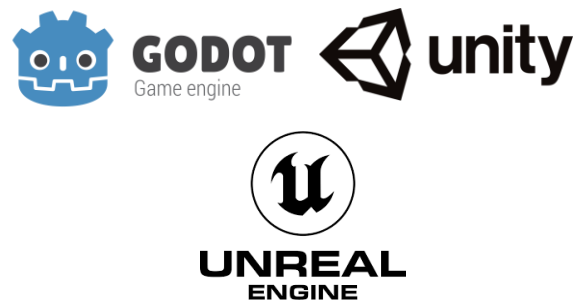


## Digital Twin (3D Engines Integration)

Simpnify is a cutting-edge platform that integrates multiple IT systems and 3D engine technologies to offer unparalleled wide-area monitoring capabilities.

This platform enables seamless interoperability across various domains, including but not limited to IoTs, Security, Communications, Fire, Safety, Disaster, Process, Energy & Building Management. By consolidating critical operations into a single cohesive platform, Simpify ensures streamlined operations, enhanced situational awareness, and improved decision-making.

A key feature of Simpify is the integration of Digital Twin technology, which creates real-time, interactive 3D models of physical assets and environments. This advanced visualization tool significantly enhances the platform's ability to plan, monitor, manage, and respond to emergencies, making Simpify an indispensable resource for modern infrastructure management and emergency response.





## Raise Situational Awareness

Provides operators with real-time Situational Awareness through standard operating procedures (SOP) with step-by-step **process guidance**, ensuring alarms/threats are managed effectively and efficiently.

The screenshot displays a 'Fire Alarm 32110' incident. The 'Alarm Details' section shows the alarm point as 'CAM-PARK-01' in 'Parking, Ventionex' and notes that no false alarm has occurred in 15 months. The 'Alarm Verification' section indicates the alarm was detected in a parking area and prompts the user to review CCTV footage. The 'Alarm Stack' table below lists active alarms:

Name Of Device	Location	Time	Person In Charge	Status	Alarm Type	Actions
CAM-PARK-01	Parking, Ventionex	01/02/2023 16:10:14	Operator 1	Handling	Fire	Handle

## Alarm Handling

The **alarm stack** UI shows a prioritized list of active alarms to be handled by operator.



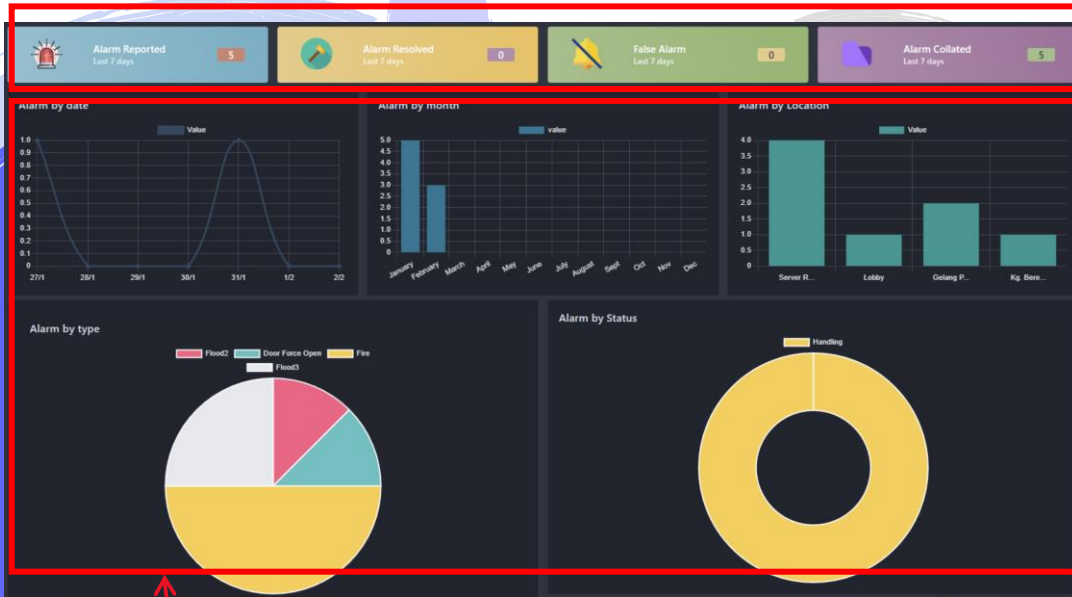
The 'Alarm Rule Details' window shows configuration options for an alarm rule. It includes sections for 'Evaluation & Condition' (Object Type: Weather Forecast, Event/State: Critical Weather), 'Set alarm conditions' (Location: Kuala Lumpur, Schedule: Working Hour), and 'Inactive at Threat Level' (Guarded). The background shows a table of existing alarm rules:

Enabled	Priority	Actions
true	1	[Checkmark] [Lock]
true	1	[Checkmark] [Lock]
true	1	[Checkmark] [Lock]



## SOPs Workflow Generator

Complete SOPs (Standard Operating Procedures) Workflow and Alarm Rules customization are in the hand of end user.



## Analytics of Overall Operational Performance

Complete visibility, audit trail & trend analysis of entire operation.



## Easy Reporting for IT

Open database provides information to 3rd party applications. Adoption time for IT personnel is minimized through the use of standard IT reporting tools.



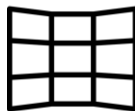
## Future-Proof

Removes the dependencies on individual device or system thus enables the seamless integration of new technologies.



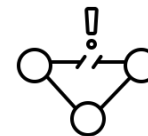
## Economic Efficiencies

By leveraging existing as well as new technologies, this will allow you make full use of the existing infrastructure whilst providing the freedom to gradually phase to newer technologies over time.



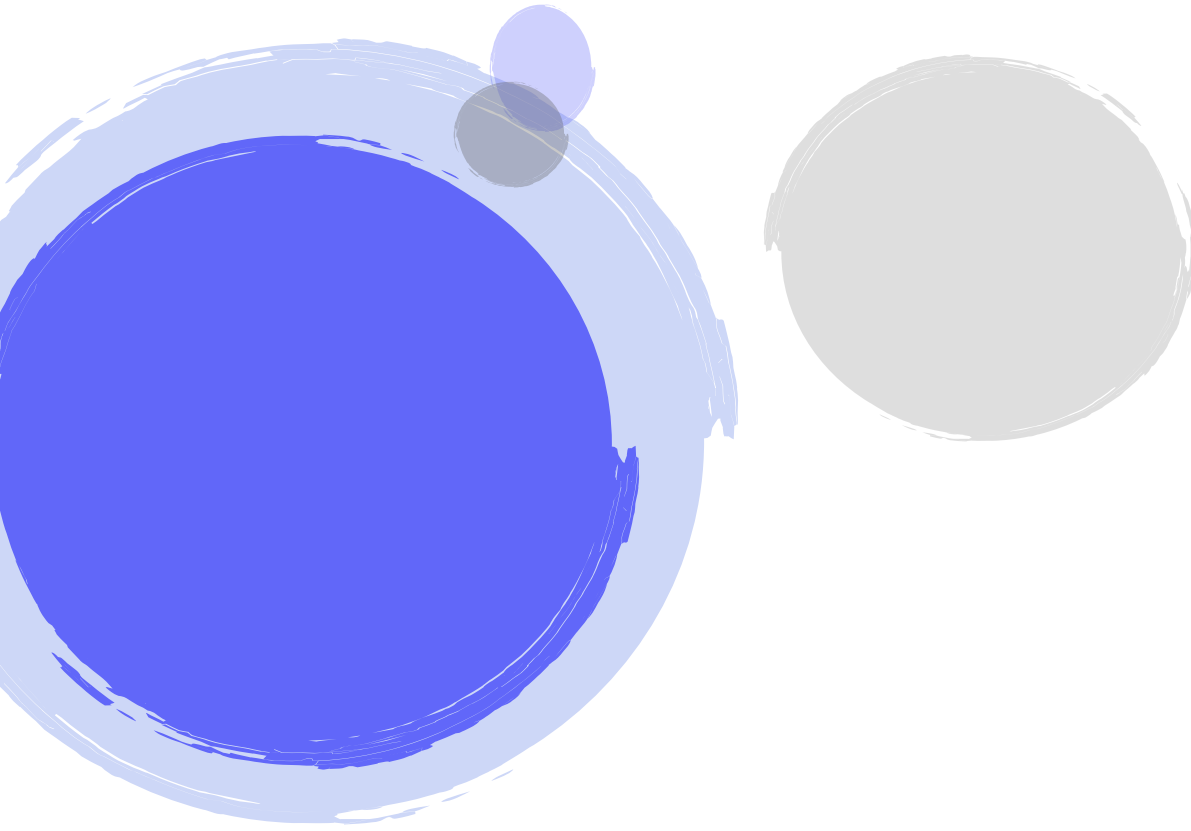
## Video Wall

Video wall deployments provide the ability to select the videowall layouts and change the content in each area.





## Resilience

The system is designed to seamlessly integrate with organization-wide IT disaster recovery, business continuity and back-up policies.



## Simpnify

### Singapore (HQ)

 55 Toh Guan Road East, #06-01 Uni-Tech Centre, Singapore, 608601  
 +65 6680 9321

### Malaysia

 No 2, Jalan Laman Setia 7/6, Setia Business Park 81550 Gelang Patah, Johor, Malaysia  
 +607 5950 387

 [enquiry@simpnify.com](mailto:enquiry@simpnify.com)

 <https://www.simpnify.com>



Simpnify



 YouTube



LinkedIn

